



- BETA handles:**
- ⌘ High-quality metal construction for strength and durability.
  - ⌘ Automatic connector: Quick, safe connection.
  - ⌘ Rheostat: Stepless brightness control with power level indicator.
  - ⌘ Knurled handle surface: Non-slip and hygienic.



All 3.5V rechargeable handles are also available from HEINE with Lithium-Ion technology (except BETA SLIM and small F.O. Laryngoscope handles).

- ⌘ Double the capacity – up to 120 min working time without recharging.
- ⌘ Lightweight and convenient.
- ⌘ No more memory effect. Full capacity whenever needed.

**Note:** ⌘ HEINE rechargeable power sources and transformers conform to the IEC 60601-1 Standard.

### The HEINE BETA® Range of Handles

#### One module. Multiple charging options.

The handle module X-000.99.010, 145 mm x 30 mm dia., is the basis of every BETA handle. By adding the appropriate bottom inserts it is possible to assemble any of the handles shown on this page. A BETA battery handle can also be converted to a rechargeable handle in this way. All BETA handles feature short-circuit protection and a continuous ceramic brightness control.



<b>BETA handle module</b>	<b>X-000.99.010</b>
---------------------------	---------------------



<b>BETA Battery Handle</b>	<b>2.5V</b>
145 mm x 30 mm dia. (batteries not included; appropriate batteries: IEC LR14)	<b>X-001.99.118</b>
BETA Bottom insert	<b>X-000.99.119</b>



<b>BETA NT rechargeable handle for NT 300 table charger</b>	<b>3.5V NiMH</b>
145 mm x 30 mm dia. with NiMH rechargeable battery	<b>X-002.99.411</b>
BETA NT bottom insert	<b>X-002.99.412</b>

Rechargeable handle with charge status display in the bottom insert.

The HEINE BETA® Range of Handles

- ⚡ Fast charge capability / 2h
- 📊 Charge status display
- 🔋 Ready-to-use feature



Charge status:  
100 – 67%      66 – 34%      33 – 1%

**Ⓛ BETA L Li-ion rechargeable handle for NT300 table charger**

With LED charge status display in the BETA L 3.5V bottom insert.

- ⚡ **Rechargeable handle with Li-ion battery.** Fast charge in 2 hours with the NT300 charger.
- 📊 **Rechargeable handle with charge status display in the bottom insert.** Display lights for 10 seconds when the handle is switched on or removed from the charger.
- ⚡ **No memory effect.** Full power at any time without loss of capacity.
- 🔄 **Updates:** Existing 3.5V BETA handles can be converted to BETA L by substituting the Li-ion L battery and BETA L bottom insert.
- 🔋 **Compatible with previous chargers (NT200).**
- 🔋 **Ready-to-use Function:** If the handle is switched on when replaced in the charger, it automatically switches off. When removed, it switches on again at the previously-selected brightness.

**Ⓛ BETA L Li-ion rechargeable handle for NT300 table charger**      3.5V Li-ion

Ⓛ 145 mm x 30mm dia., with Li-ion L rechargeable battery, complete	<b>X-007.99.395</b>
Ⓛ BETA L Bottom insert with charge status display	<b>X-002.99.396</b>



**BETA TR Rechargeable Handle with transformer**      3.5V NiMH      3.5V Li-ion

145 mm x 30mm dia., with plug-in transformer. The BETA TR handle is charged by an external transformer. An LED indicates whether the handle is being charged. The special handle rest prevents it from rolling away.

BETA TR without transformer	<b>X-002.99.384</b>	<b>X-007.99.384</b>
Transformer for BETA TR rechargeable handle	<b>X-002.99.386</b>	<b>X-007.99.386</b>
BETA TR bottom insert	<b>X-000.99.309</b>	<b>X-000.99.309</b>
	<b>X-002.99.385</b>	<b>X-002.99.385</b>



**BETA R Rechargeable Handle for mains socket**      3.5V NiMH      3.5V Li-ion

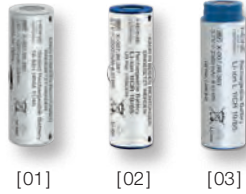
170 mm x 30mm dia. The BETA R handle can be charged directly in the mains socket or outlet after unscrewing the cap.

BETA R bottom insert	<b>X-002.99.376</b>	<b>X-007.99.376</b>
	<b>X-002.99.377</b>	<b>X-002.99.377</b>

230V is the standard mains voltage. If a different voltage is required, e. g. 120V, please specify when ordering.



HEINE rechargeable batteries for BETA® Handles



Rechargeable batteries	3.5V NiMH	3.5V Li-ion	3.5V Li-ion L
for BETA rechargeable handles	<b>X-002.99.382</b>	<b>X-007.99.381</b>	<b>X-007.99.383</b>
	[01]	[02]	[03]

**Please note:** The Li-ion L battery is not compatible with BETA R, TR and NT 3.5V handles and bottom inserts. For information on HEINE Laryngoscope Handles, see pages 073 – 076.

- All full-size BETA handles can be updated to BETA L 3.5V (except BETA SLIM) handles by substituting the Li-ion L 3.5V battery and the BETA L bottom insert.
- Max. 4 hours recharge time in NT300 table charger with NiMH. 2 hours with Li-ion.
- Retro-compatible. All rechargeable batteries can also be charged in existing NT200 and Nicatron chargers.



<b>BETA Belt Clip</b>	<b>X-000.99.008</b>
-----------------------	---------------------

Ⓛ: Rechargeable handle with charge status display in the bottom insert.

HEINE Large Battery Handle



Dimensions: 165 mm x 37 mm dia. Weight: 212 g without batteries, 505 g with batteries.  
A large handle for 2 alkali-manganese batteries IEC LR20/D cells. Designed for countries where larger batteries are still preferred. (Only suitable for certain instrument cases.) Batteries not included.

Large battery handle	2.5V
for 2 alkali-manganese batteries, size D	<b>X-001.99.120</b>

HEINE BETA® SLIM Battery/Rechargeable Handle



Dimensions: 135 mm x 19mm dia. Weight: 180g.  
A compact handle with automatic connector for those who prefer a slim handle. Rechargeable in NT300 charger fitted with the small adaptor ring. Batteries not included.

BETA SLIM battery / rechargeable handle	2.5V	3.5V NiMH
BETA SLIM Battery Handle	<b>X-001.99.105</b>	
BETA SLIM Rechargeable Handle with 3.5V M3Z NiMH battery		<b>X-002.99.471</b>
Rechargeable battery 3.5V M3Z NiMH [01]		<b>X-002.99.106</b>

[01]

## HEINE mini 3000® Battery Handle



Innovative, compact battery handle in a high-quality, modern design. Suitable for all mini3000 instruments.

- ∴ **Oval, compact, stylish shape.** Lies ergonomically in the hand.
- ∴ **High-quality handle: Chrome-finish upper section/refined plastic.** Shockproof, sturdy, non-slip.
- ∴ **Attachment clip with integrated on/off switch.** Secure. Switches off automatically when returned to the pocket. 20.000 switch cycles guaranteed.
- ∴ **Screw-on end cap.** For easy battery change.
- ∴ **Threaded connector made of metal.** Prevents wear.
- ∴ **Replaceable batteries.** Size AA, or optional rechargeable battery with mini NT table charger.
- ∴ **Complete range of mini3000 instruments.** Versatile range.
- ∴ **Registered Design.**
- ∴ **Rechargeable mini3000 handle.** The mini3000 battery handle can be retro-fitted with the mini rechargeable battery 2.5V NiMH and the bottom insert to update to the mini3000 rechargeable handle. Fully-automatic charging with the mini NT table charger.



### mini3000 Battery Handle

2.5V

with two dry batteries IEC LR6 (AA size)

**D-001.79.021**

All non-rechargeable mini handles are fitted with batteries (IEC LR 6 AA size). mini3000 handles can be supplied in black or blue. Please specify the colour you prefer when ordering. If not otherwise specified, we will supply black instruments.

## HEINE® NT300 table charger

### The best in performance and quality



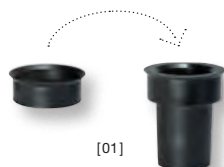
Dimensions: Width 142 mm, Height 61 mm, Depth 66 mm, Weight 830 g. The NT300 table charger automatically charges HEINE rechargeable batteries irrespective of their state of charge or their output voltage. The rechargeable battery cannot be overcharged. With the appropriate adaptor set it is possible to recharge all BETA L, BETA NT, BETA SLIM rechargeable handles and laryngoscope rechargeable handles in the same NT300. Exceptions are the rechargeable versions of the Short and the Small F.O. LED Handles.\*

- ∴ **Innovative, compact design.** Practical and space-saving.
- ∴ **Two independent charging compartments.** Complete functionality for one or two handles at a time.
- ∴ **Fast charge feature.** 2 hours to recharge rechargeable handle with Li-ion L rechargeable battery. 4 hours for other rechargeable handles.
- ∴ **Automatic charging.** Independent of the state of charge of the rechargeable battery. Guarantees extended battery life.
- ∴ **Charge status display.** Light pulses from the charging compartment to confirm the charging mode.

∴ Fast charge capability

∴ Automatic charging

∴ Charge indicator



[01]

### NT300 table charger

for BETA handles and Laryngoscope handles Angled F.O., Standard F.O. and Short F.O. (without handle, with adaptor)

**X-002.99.495**

Adapter set (two pieces) for BETA SLIM and Small F.O. Laryngoscope Rechargeable Handles [01]

**X-000.99.086**

\*Due to the increased demands on the charging management function of these rechargeable batteries, a latest generation HEINE NT300 recharging station must be used to properly and fully recharge these rechargeable batteries. Latest generation HEINE NT300 recharging stations can be identified by the serial number on the underside of the recharging station. Recharging stations starting with the serial number **SN 101 1000 001** are compatible.



HEINE® mini NT charger set for mini3000®

Compact charging technology



∴ Fast charge capability

∴ Automatic charging

∴ Charge indicator

**mini NT Charger set 2.5V.** Consists of the mini NT table charger, 2 mini NT rechargeable batteries and 2 bottom inserts for the mini 3000 rechargeable handles. With this set, existing mini 3000 handles can be updated to the 2.5V rechargeable system. Optional adaptor set for mini 2000.  
mini NT table charger: Width 112mm, Height 50mm, Depth 52mm, Weight 270g.

- ∴ **Innovative, compact design.** Practical and space-saving.
- ∴ **Two independent charging compartments.** Complete functionality for one or two handles at a time.
- ∴ **Fast charge feature.** 4 hours to recharge a mini3000 NiMH 2.5V rechargeable battery.
- ∴ **Automatic charging.** Independent of the state of charge of the rechargeable battery. Guarantees extended battery life.
- ∴ **Can not be overcharged.** Charger switches off automatically when the battery is fully charged.
- ∴ **Charge status display.** Light pulses from the charging compartment to confirm the charging mode.
- ∴ **No memory effect.** Full power at any time without loss of capacity.

**Please note:** Suitable only for mini3000 2.5V NiMH rechargeable battery.



mini NT table charger and accessories	
mini NT Charger, only [01]	X-001.99.484
mini3000 Rechargeable handle complete* [02]	D-001.79.022
Rechargeable battery NiMH 2Z, only [03]	X-001.99.487
Bottom insert for mini 3000 Rechargeable Handle, only [04]	X-001.99.488



mini NT Adaptor Set for 1 mini 2000 Handle	
This set contains:	
1 bottom insert [01] and 1 adaptor for mini2000 [02]. Together with a rechargeable battery it will allow the upgrade of one existing mini2000 handle.	X-001.99.493



mini NT Charger Set for 2 mini 3000 Handles	
With this set, existing mini 3000 Handles can be updated to the 2.5V rechargeable system. It contains:	
mini NT table charger [01], 2 rechargeable batteries NiMH 2Z [02], 2 bottom inserts for mini 3000 rechargeable handle [03]	X-001.99.485



\*HEINE mini3000 pocket instruments – a complete range of quality diagnostic instruments for your pocket. Available in black or blue. Please specify the colour you prefer when ordering. If not otherwise specified, we will supply black instruments.

HEINE Lamp Handle



6V / 4.2W

Economically-priced light source ensuring bright illumination for Fiber Optic instruments such as anoscope, proctoscope, sigmoidoscope.  
Length of cord: 2m. Cinch plug for connection to a 6V power source.  
Recommended power source: E7.

<b>Lamp Handle</b>	<b>6V</b>
with switch and XHL Xenon Halogen bulb	<b>X-004.99.607</b>
Spare bulb	<b>X-004.88.060</b>
<b>Extension cord.</b> Suitable for all HEINE instruments and power sources with cinch connector. Length 2 m.	<b>C-000.33.510</b>

HEINE Cord switch



On/Off switch. Suitable for HEINE instruments and power sources with cinch connector (e. g. E7).

Cord switch	<b>X-095.16.202</b>
-------------	---------------------

Plug-in transformer HEINE® E7



6V/6W max. Power source, suitable for lamp handle.

<b>E7</b>	<b>6V</b>
Plug-in transformer E7	<b>X-095.16.104</b>
same, with lamp handle	<b>X-095.16.105</b>



Plug-in transformer for the HEINE® ML 4 LED/OMEGA® 500



Powerful electric supply unit for the ML 4 LED HeadLight/OMEGA 500 (System voltage 6V).

Plug-in transformer for ML4 LED HeadLight/OMEGA 500	<b>X-095.16.330</b>
-----------------------------------------------------	---------------------

HEINE® HC 50 L Headband Rheostat

Fingertip Illumination Control for OMEGA 500/UNPLUGGED



[01]

- ∴ Left or right sided Mounting Options on the OMEGA Headband.
- ∴ Can be combined with EN50 and mPack (with connection cord X-000.99.667).
- ∴ 100–240V Compatible Transformer.
- ∴ For use with OMEGA 500 with XHL- and LED-Illumination.



[02]



[03]

<b>HC50 L Headband Rheostat</b>	<b>6V</b>
HC50 L Headband Rheostat (without plug-in transformer and connecting cord) [01]	<b>X-095.16.325</b>
Plug-in transformer for HC50 L Headband Rheostat [02]	<b>X-095.16.330</b>
Connecting cord UNPLUGGED-Cinch [03]	<b>X-000.99.667</b>

## Wall Transformer HEINE® EN50 UNPLUGGED

### Intelligent charger for mPack UNPLUGGED



- ⌘ **Charger and wall-mount in one.** The wall transformer serves as an instrument holder and a charger at the same time.
- ⌘ **Intelligent charging system.** The instrument automatically switches off and goes into charging mode when placed in wall transformer. It is impossible to overcharge the mPack UNPLUGGED; the process ends automatically when charging is completed.
- ⌘ **Simultaneous charging.** The charging system charges the battery on the headband as well as an additional single spare battery.
- ⌘ **Compatible transformer (100 – 240V).** Multi-voltage power supply unit incl. 4 different mains adaptors.
- ⌘ **Registered Design.**

Wall transformer EN 50 UNPLUGGED  
(without mPack UNPLUGGED) 6V

X-095.17.310

- ⌘ Charger and wall-mount in one
- ⌘ Intelligent charging system

## HEINE® mPack UNPLUGGED

### Headband-mounted rechargeable battery

Rechargeable battery for OMEGA500 Indirect Binocular Ophthalmoscope UNPLUGGED and ML4 LED HeadLight UNPLUGGED (System voltage 6V).



- ⌘ **Lightweight with balanced weight distribution.** High level of comfort.
- ⌘ **Charge status display.** Display of remaining operating time.
- ⌘ Can be recharged by **wall- or plug-in transformer.**
- ⌘ **Direct operation possible while charging** through the use of the mobile plug-in transformer.
- ⌘ **Charging time:** 2 hours.
- ⌘ **Operating time:** 3.5 hours for ML4 LED HeadLight, 2 hours for OMEGA500 UNPLUGGED, 8 hours for OMEGA500 UNPLUGGED with LED.
- ⌘ **Intelligent charging system.** Automatic changeover from operating to charging mode (in the wall unit).
- ⌘ **Top safety standards.** Integrated charge and performance checks during operation. Lithium polymer technology. UL-compliant.
- ⌘ **Registered Design.**

- ⌘ Headband battery (rechargeable)
- ⌘ LED charge status display



[01]



[02]



#### mPack UNPLUGGED

mPack UNPLUGGED

X-007.99.665

Transformer UNPLUGGED for mPack UNPLUGGED [01]

X-095.16.316

Lithium-Polymer rechargeable battery  
for mPack UNPLUGGED

X-007.99.680

Extension Cord from plug-in transformer UNPLUGGED to mPack  
UNPLUGGED, 2m [02]

X-000.99.668





HEINE® mPack/HEINE® mPack LL

Portable Power Packs

The mPack is only compatible with OMEGA500 and ML4 LED HeadLight.

The mPack LL is only compatible with LED LoupeLight, LED MicroLight, SIGMA250 and SIGMA250 M2.



- ∴ Li-ion Battery
- ∴ Battery Capacity Indicator
- ∴ Fast Charge

- ∴ **Brightness control from 0.5 – 100 %**
- ∴ **Capacity LED LoupeLight and LED MicroLight:** 17 hours from fully charged under full load.
- ∴ **Capacity SIGMA250 and SIGMA250 M2:** 23 hours from fully charged under full load.
- ∴ **Freedom from cables** that tie the user to desk, wall or static power supplies.
- ∴ **Triple the Capacity with Li-ion Technology.** Compared with current NiCd systems. When fully charged at least 3x the capacity of conventional NiCd systems. More than double of other Li-ion systems. No memory effect.
- ∴ **Fast Charge.** Charges to full capacity in just 2 hours.
- ∴ **Charge status display.** Always lets you know how much operating charge you have left.
- ∴ **Flexible Charging Options.** Charge in the EN50 Charger base station, or with mobile plug-in transformer.
- ∴ **Intelligent.** Automatically switches to “charge” mode when inserted in EN50. Can also be used as mains power supply even while in “charge” mode.
- ∴ **Automatic remote power adjustment** for compatibility with all HEINE 6V and selected LED instruments.
- ∴ **Stepless light intensity control.** Optimum brightness setting prevents reflexes.
- ∴ **100 – 240V Compatible Transformer** incl. 4 plugs for world wide compatibility.



[01]



[02]



[04]



[03]



mPack / mPack LL	6V
EN50-m Charger Wall/Table Unit with <b>mPack</b> , (incl. 90° Angled Adaptor, Instrument support for Professional L Headband [01])	<b>X-095.17.302</b>
same, with <b>mPackLL</b> and instrument support for S-FRAME [02] and Professional L Headband [01]	<b>X-095.17.303</b>
<b>mPack</b> with Li-ion rechargeable battery and plug-in transformer	<b>X-007.99.672</b>
<b>mPackLL</b> with Li-ion rechargeable battery and transformer	<b>X-007.99.660</b>
<b>mPack</b> with Li-ion rechargeable battery, without transformer	<b>X-007.99.671</b>
<b>mPackLL</b> with Li-ion rechargeable battery, without transformer	<b>X-007.99.661</b>
Li-ion rechargeable battery for mPack/mPackLL	<b>X-007.99.676</b>
Plug-in transformer for mPack/mPackLL [04]	<b>X-095.16.315</b>
Plug-in 90° Angled Adaptor (for EN50 Charger/mPack and mPackLL) [03]	<b>C-000.33.509</b>

Wall- /Table-Transformer HEINE® EN 50

**Modular Power Supply System/ charger**



- ∴ Modular Power Supply System
- ∴ Soft Start Technology
- ∴ Switches off automatically



The HEINE Modular Power Supply System offers unsurpassed flexibility and innovative new features. The EN 50 powers OMEGA500, SIGMA250, ML4 LED HeadLight, LED MicroLight and LED LoupeLight. Furthermore, all other HEINE 6V products are compatible. The EN 50 Charger, the mPack/mPack LL and HC 50 L Headband Mounted Rheostat can be combined in every conceivable configuration.

- ∴ **Modular, compact design** functions as the base for Tabletop or Wall Mounted use and as charging base for the mPack and mPack LL mobile charging system.
- ∴ **Upgradeable.** mPack Charging base by simple removal of the control module.
- ∴ **Soft Start Technology.** A gradual introduction of current reduces bulb “shock” and extends bulb life.
- ∴ **100 – 240V Compatible Transformer** incl. 4 plugs for world wide compatibility.
- ∴ **Registered Design.**

EN50 Charger	6V
EN50 Transformer table/wall unit with Rheostat Control Module (incl. 90° Angled Adaptor, Extension Cord Cinch-Cinch 2m, Instrument support) [01]	<b>X-095.17.301</b>
Rheostat Control Module* for EN50 [02]	<b>X-095.17.305</b>
EN50 Base unit (without Rheostat Control Module) [03]	<b>X-095.17.300</b>
Plug-in 90° Angled Adaptor (for EN 50/mPack/mPack LL without instrument support) [04]	<b>C-000.33.509</b>
Instrument support for Headband	<b>C-000.33.511</b>
Instrument support for S-FRAME and LED LoupeLight	<b>C-000.33.512</b>

\*not compatible with SIGMA250, LED MicroLight and LED LoupeLight